



# Achieving Sustainable School Sanitation for Broader Social Development



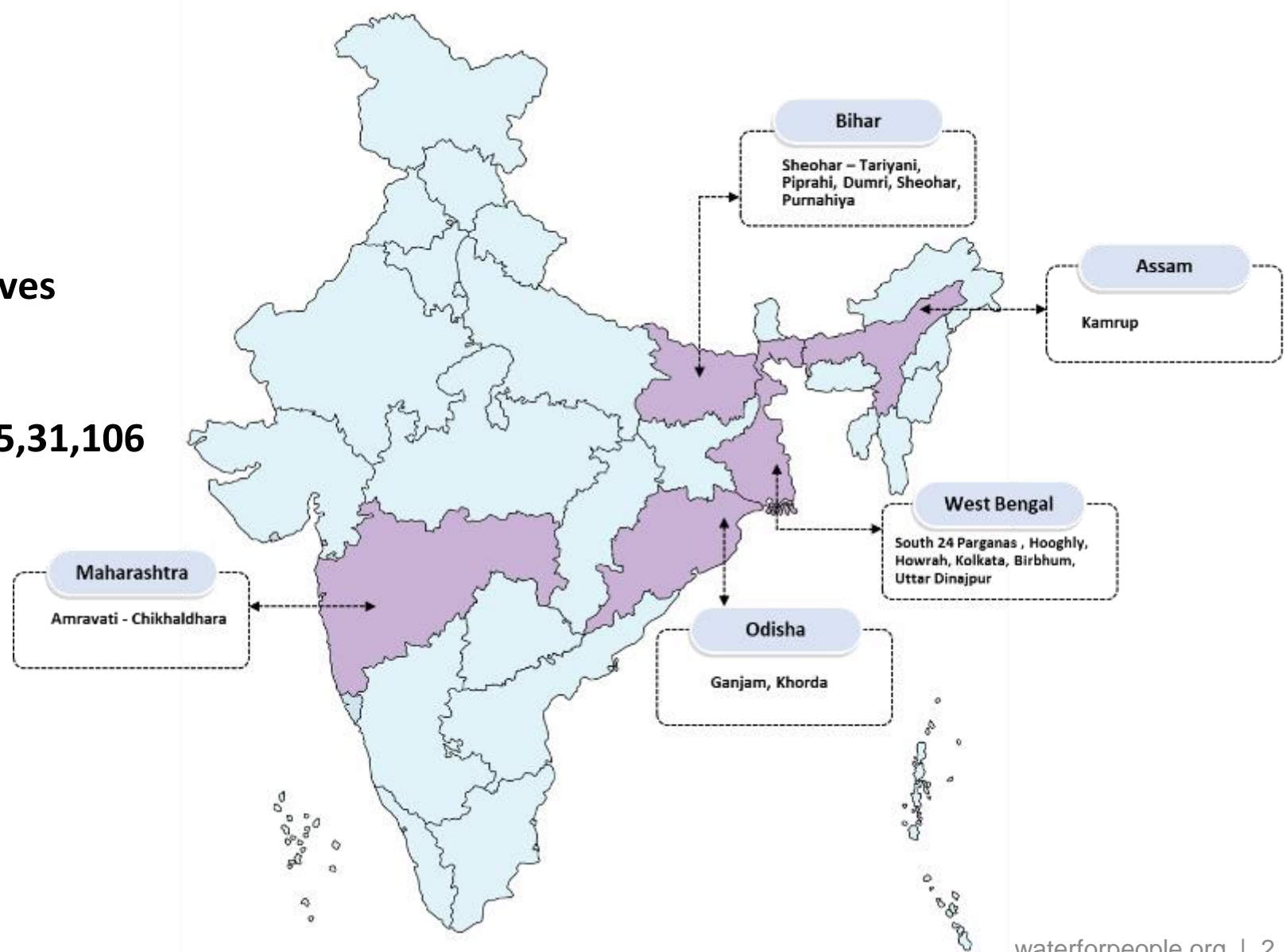
water for people  
EVERYONE • FOREVER

**Presented by: Sujata Tripathy**  
**Program Lead**  
**Water For People India**

# PROGRAM AREAS – WASH IN SCHOOLS

## Overall Reach for WASH Initiatives

- Five States
- More than 1000 schools
- Student and Staff Reached: 5,31,106



# UNDERSTANDING THE SCHOOL WASH ISSUES

## Impact related to WASH in schools

- 600,000 children under five die each year, largely due to inadequate water supply and poor sanitation
- 45% children under 5 in India are stunted

- Diarrhea
- Weaker Immune system
- Worm infections
- Scabies
- Malaria, Typhoid, Trachoma

- Educational attainment
  - Absenteeism
  - Attrition
  - Concentration
  - Test scores
- Water availability
  - Dehydration
- Privacy and safety
- Menstrual Hygiene Management

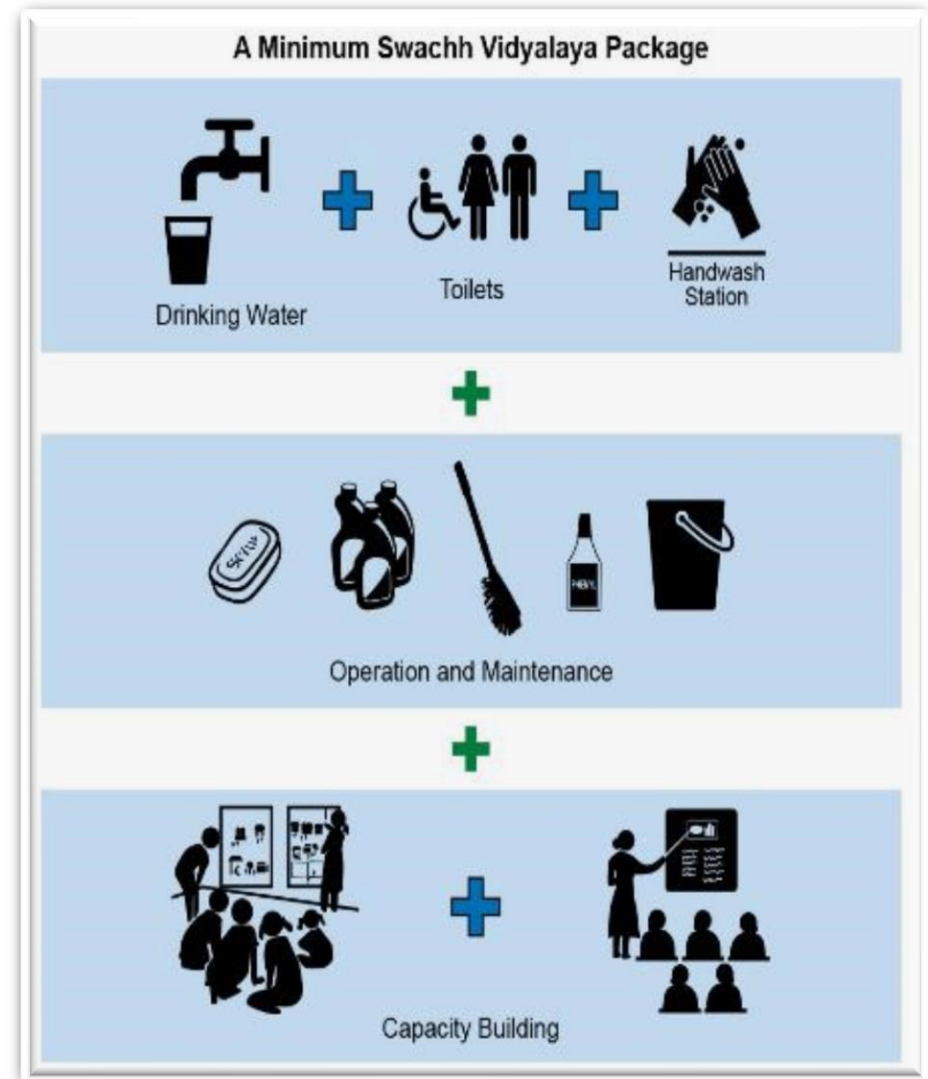
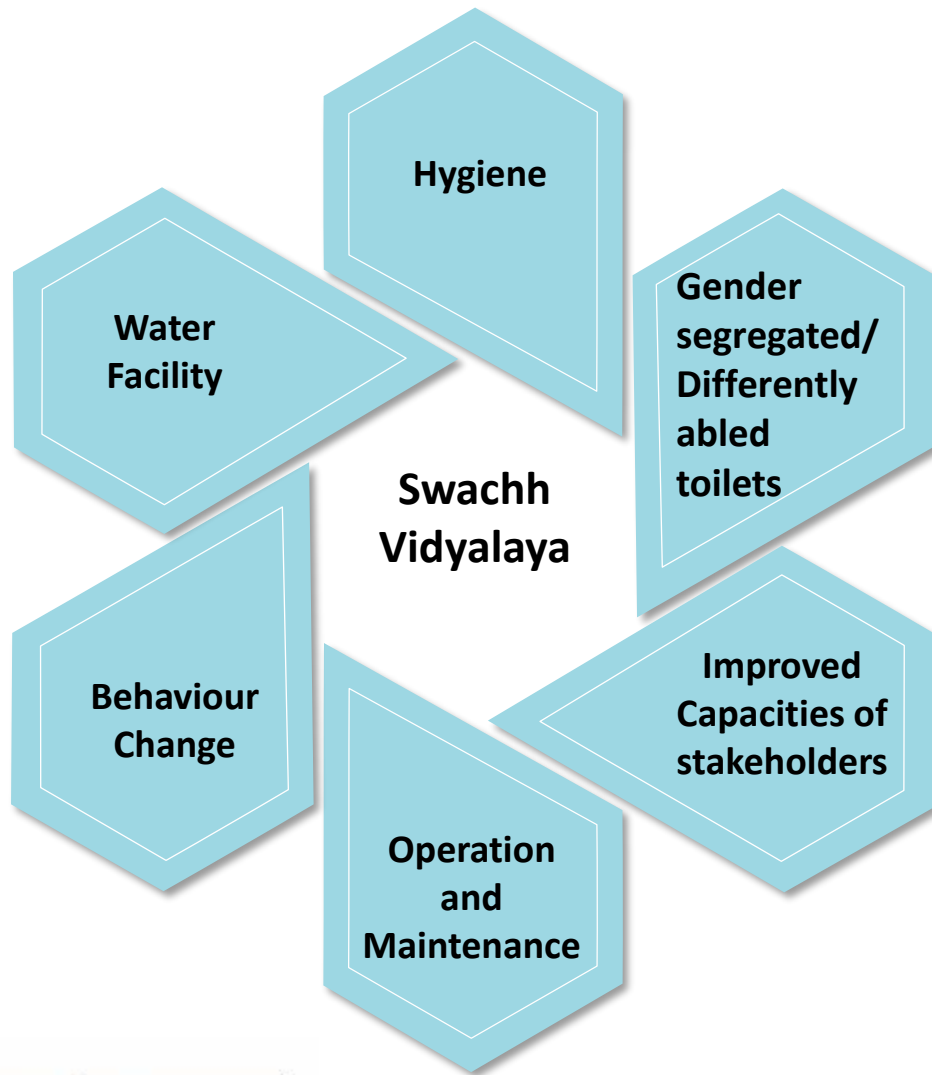
# BOTTLENECKS IN DELIVERY

- Gap in facility and funds
- Technical skills – construction, child-friendly designs, etc.
- Functionality
- Water availability and Water quality issues
- Menstrual Hygiene Management
- Equity – boys, girls and physically challenged (Facilities)



- Lack of Awareness - behaviour related concerns
- Lack of handwashing facilities with soap
- O&M related issues
- Convergence
- Monitoring Mechanism

# KEY COMPONENTS (WinS)





# PREREQUISITES FOR WASH-FRIENDLY SCHOOLS

## Water Supply

- Availability, Accessibility and Quality

## Gender Segregated Toilet facilities

- Child-friendly, gender-specific, change room for adolescent girls (MHM facility), culturally and environmentally appropriate, private, safe, and well maintained.

## Hygiene

- Personal Hygiene, Menstrual Hygiene, Food Hygiene, Cleanliness of toilet blocks and campus, Solid Waste Management, Sanitation and Nutrition



# ENABLING ENVIRONMENT FOR WASH-FRIENDLY SCHOOLS

## Capacity Building

- School Management, parents, child cabinets, local government and PRI members for active involvement and monitoring

## Operation and Maintenance

- Cleaning Material Drive
- Co-financing/contributions
- Linkage with GPDP

## Behaviour Change

- Emphasizing on IEC
- Events at schools and communities on O&M, toilet usage, cleanliness





# SCHOOL WASH - KEY COMPONENTS AND IMPLEMENTATION STRATEGY





# IMPLEMENTATION PROCESS - TOWARDS ACHIEVING SUSTAINABLE SCHOOL SANITATION FOR BROADER SOCIAL DEVELOPMENT

## Needs Assessment/NOC and Co-Financing

Discussion with Education Authorities & Block/Gram Panchayat

Field verification/feasibility of schools

Finalisation of list and concurrence with school authorities

School / Local Contribution and Fund Mobilization

## Construction of Toilets

Child Engineering

Planning and Estimate

Construction

## Behaviour Change Communication

Formation of Peer Group

Training of the students on health and Hygiene, sanitation and handwashing

Training of Teachers on health and hygiene and Child Cabinet Management

## Operation and Maintenance

Strengthening School Management Committee

Calculation of operating costs of improved sanitation and water facilities 'At What Cost'

Linkage with Gram Panchayat and Nirmal Bandhu for Toilet Cleaning and maintenance

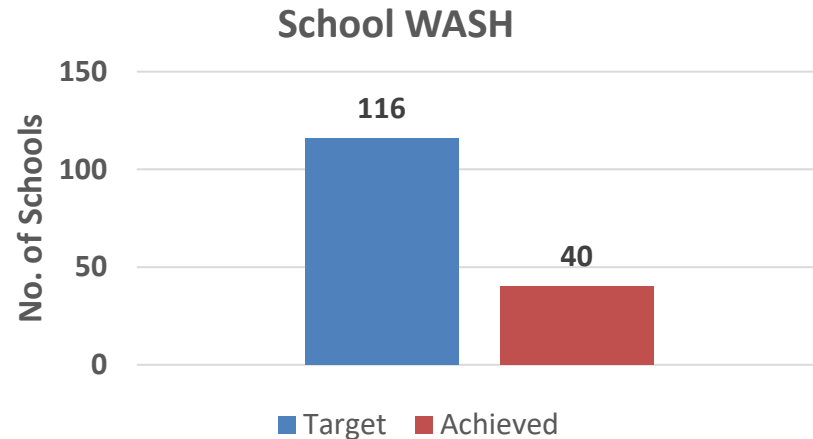
WASH Material Corner

## Sustainable School Sanitation

Making Schools Self Sustainable in Terms of Behavior for Toilet Usage and Operation and Maintenance

# Swaccho Nirapad Parivesh (Clean and Safe Environment)

Project Area: Rajnagar Block,  
Birbhum district, West Bengal  
Since April 2018



Reached 40 schools benefitting 3962 students  
Strengthened 841 Child cabinet members  
(Girls- 410; Boys- 431)

Intervention	School Contribution In INR Millions	NSEF/WFPIN In INR in Millions
School Wash Retrofitting	0.26 \$ 3,714	4.03 \$56,721



water for people  
INDIA

\* NSE Supported Project

## || Key Achievements ||

- Students confidently demonstrate improved handwashing practices (Washing hands with soap at all critical times) in 50 schools
- Mechanism for operation & maintenance (O&M) established/strengthened in 40 schools
- Strengthening of School Development Committees (Primary School) in 42 schools to ensure their participation in terms of co-finance, O&M.
- In 14 schools of Rajnagar G.P, and dustbin provided by the G.P. (Plan incorporated in GPDP) - The G.P will provide dustbins to 14 schools and the funds for it is incorporated in GPDP
- Seven Parents Association have opened an account for school O&M
- Child cabinet actively involved in 34 schools towards ensuring cleanliness in each classroom by preparing dustbins

# REACH AND OUTCOMES

- Total No of schools:- 1161
- Total students benefitted:- 5,31,106
- No. of Child Cabinets/WATSAN Committees formed:-1161 reaching out to 13798
- No. of SECs/PTAs strengthened:- 1161
- No. of schools whose WASH plans are incorporated in GPDPs:- 59 schools

## Voices from Stakeholders



**Smt. Babita Ankur**  
Mid-day meal cook  
Sirsha Koradangal Primary School

*"The children are so happy to have such facilities. We daily see how they enjoy using these facilities. They form a queue to wash hands, rub their palms with soap and then diligently proceed to have their meals"*

**Smt. Babita Ankur**  
Mid-day meal cook  
Sirsha Koradangal Primary School  
Bhabanipur Gram Panchayat, Birbhum district

## Rewarding Excellence



State level Jamini Roy Puraskar awarded to Hooghly Prabhabati Girls High School in 2018



Nirmal Vidyalaya Puraskar awarded to 3 schools after Water For People India intervention

(10 schools awarded Nirmal Vidyalaya Puraskar)



# GLIMPSES OF OUR WASH JOURNEY

## Pre-Intervention



## Post-Intervention



# WALL MESSAGING TO DRIVE HOME BETTER HYGIENE BEHAVIOUR



**Wall Paintings & Child-friendly fittings in School Toilets**





# WASH FACILITIES

## Handwashing Facilities in School



## Change Room in Schools





# OPERATION AND MAINTENANCE OF SCHOOL WATER SANITATION FACILITIES



## Community Participation Activities in Schools



water for people  
INDIA



# PARENTS' CONTRIBUTION - CREATION OF WASH CORNER



# WAY FORWARD

- Facilitate the linkage of **School WASH operation and Maintenance in GPDP**
- Propagate **child friendly School WASH infrastructure** with special focus on Menstrual Hygiene Management and running water within the toilet blocks along with handwashing stations.
- **Interface with School Education department** to encourage hygiene promotion and operation & maintenance of school WASH infrastructure, also on upgradation of twin pit toilets and waste management.
- **Strengthening the School Management Committee/School Education Committees** to ensure and contribute towards 'CLEAN SCHOOLS'.
- **Encourage schools to share their achievements** ( e.g Jamini Roy Puraskar/Nirmal Vidyalaya Puraskar etc.) at various platforms.





Thank You

Find out more about our activities @  
<https://www.waterforpeople.org/>